

The Centrium 中央廣場

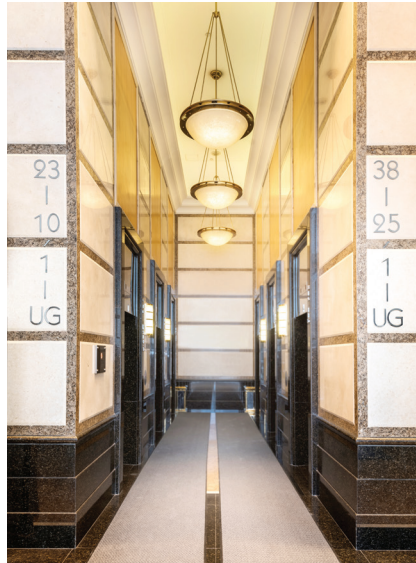


60 Wyndham Street 雲咸街 60 號

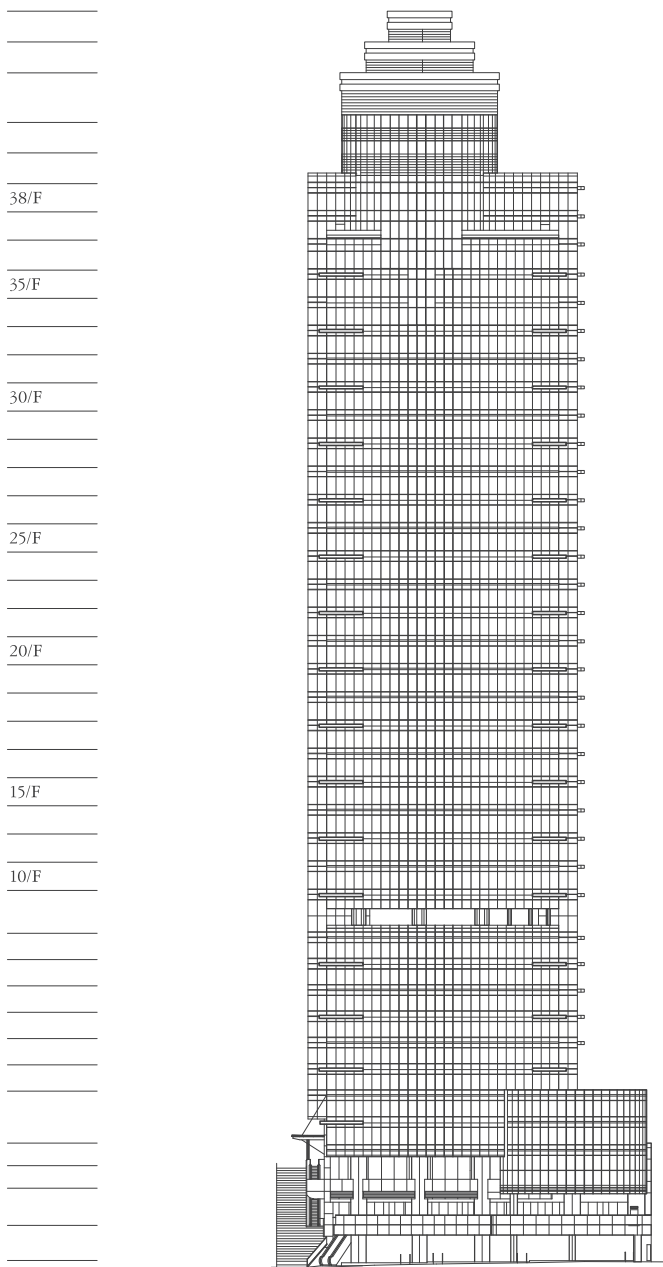
CENTRAL · 中環

The Centrium

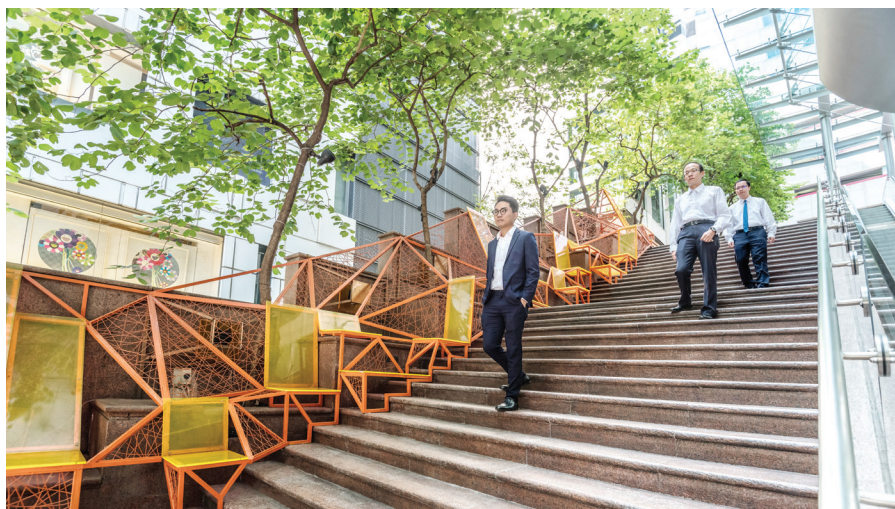
中央廣場



- Contemporary office tower strategically located in the heart of Central with the renowned Lan Kwai Fong/SoHo District as well as vibrant arts and culture neighbourhood on the doorstep
- Proximity to Central MTR Station and the Mid-Levels Escalator
- Free shuttle service to and from Alexandra House (Subject to change without prior notice)
- Modernistic office spaces that enable flexibility in interior layout and design
- Spectacular views of Victoria Harbour and the city's world-famous skyline
- Ample parking in 6-storey car park
- 時尚商廈座落中區核心地段，毗鄰蘭桂坊/蘇豪區以及文化藝術區，位置優越
- 鄰近港鐵中環站及半山自動扶手電梯
- 免費穿梭巴士往返歷山大廈 (如有更改，恕不另行通知)
- 現代化辦公室設計，間隔實用靈活
- 飽覽世界聞名的維港景致及香港天際線
- 6層停車場，車位充裕



Wyndham Street Elevation
雲咸街立面



Building Information and Specifications 大廈資訊及建築規格

NO. OF OFFICE FLOORS 寫字樓層數 :
25 Floors 25層

TYPICAL FLOOR AREA
每層樓面面積 :
11,725 sq.ft. 11,725平方呎

FLOOR-TO-FLOOR HEIGHT 樓層高度 :
3.75m 3.75米

OFFICE CEILING HEIGHT 淨樓層高度 :
Approx. 2.6m 約2.6米

OFFICE FLOOR LOADING 樓面負重量 :
General Floor Loading of 3 - 5kPa
一般樓層負重 3 - 5kPa

AIR CONDITIONING SYSTEM 空調系統 :
Fan Coil Central Air Conditioning System
冷凝盤管式中央空調系統

FIRE SERVICES SYSTEM 消防系統 :
Automatic Sprinkler System and
Fire Alarm System
消防花灑系統及火警警報系統

POWER SUPPLY 電力供應 :
160A TPN to 500A TPN
160安培 (三相) 至 500安培 (三相)

TELECOMMUNICATIONS 通訊設備 :
Wifi Signal Coverage in Main Lobby &
Fibre-optic Cable Network
大堂設有Wifi及寫字樓光纖網路

NO. OF LIFTS 升降機 :
6 Passenger Lifts & 1 Cargo Lift
6部客運升降機及1部載貨升降機

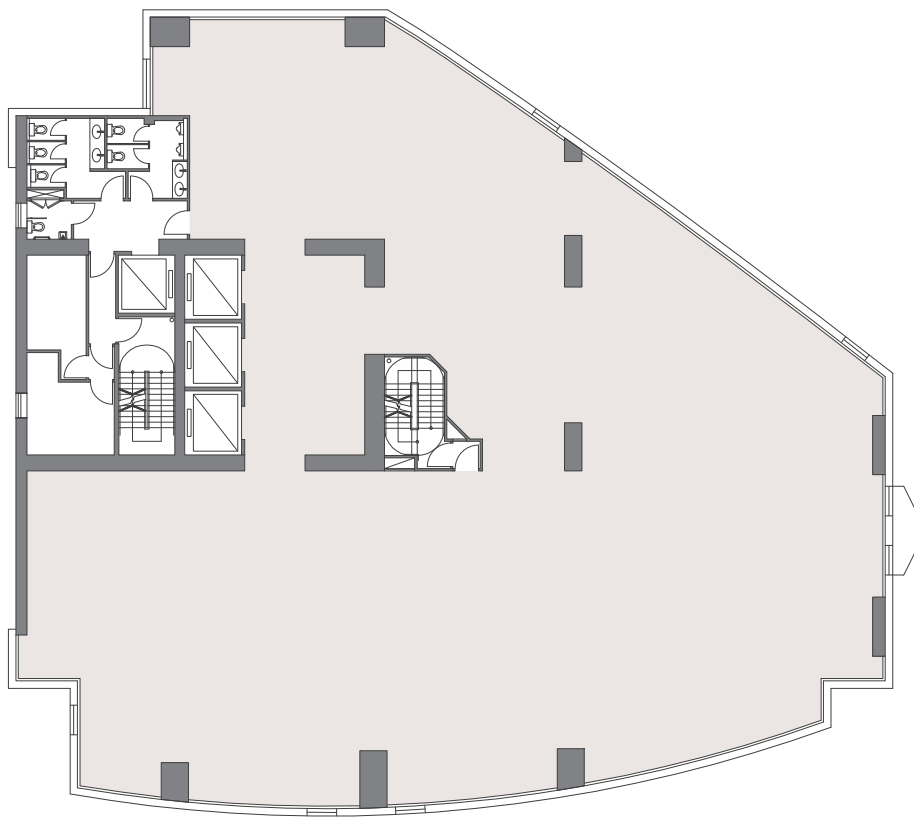
SECURITY 保安系統 :
CCTV Surveillance
閉路電視監控系統

CAR PARKING SPACES 停車場車位 :
72 Private Car Parking Spaces & Electric
Vehicle Charging Stations Available
72個私家車車位, 另設有電動車充電車位

BACKUP POWER FOR TENANTS 後備供電 :
Upon Tenant's Request
按租戶要求提供

25/F ~ 32/F

25至32樓





- Restaurants 食肆
- Attraction 旅遊景點
- Shopping Mall 購物商場
- Central-Mid-Levels Escalator and Walkway System 中環至半山自動扶手電梯系統
- Pier 碼頭

Leasing Hotline 租務熱線

8336 3888

Service Hours 服務時間：Mon - Sun 星期一至日 09:00 - 22:00

www.thecentrium.hk www.sino-offices.com leasingcs@sino.com



您的租務伙伴
YOUR LEASING PARTNER

All information and photos are for reference only. We take no responsibility for the contents of this brochure/leaflet/promotional material, make no representation as to its accuracy or completeness and, to the extent permitted by law, expressly disclaim any liability whatsoever for any loss howsoever arising from or in reliance upon the whole or any part of the contents thereof. 所有資料及圖片僅供參考。本公司對本冊子/單張/宣傳資料之內容概不負責，對其準確性或完整性亦不發表任何聲明，並明確表示，在法律允許的範圍內，概不對因本冊子/單張/宣傳資料全部或任何部分內容而產生或因依賴該等內容而引致之任何損失承擔任何責任。